

Konturierungsstudie beim Pankreaskarzinom

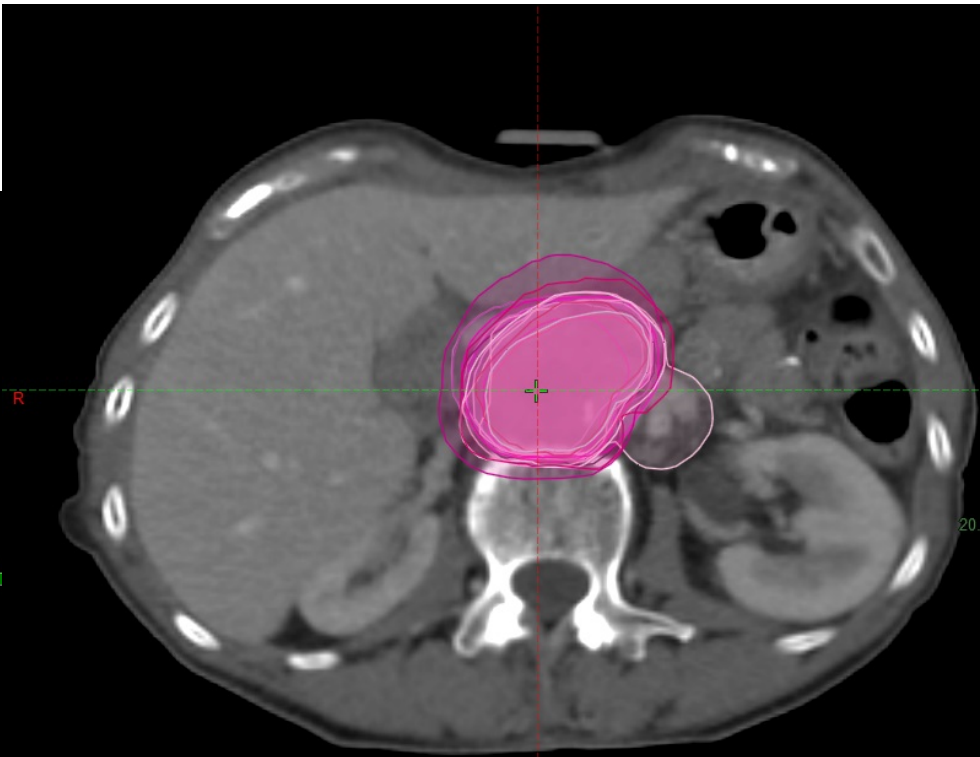


PD Dr med E. Gkika

Dir.: Prof. Anca-L. Grosu

Department of Radiation Oncology

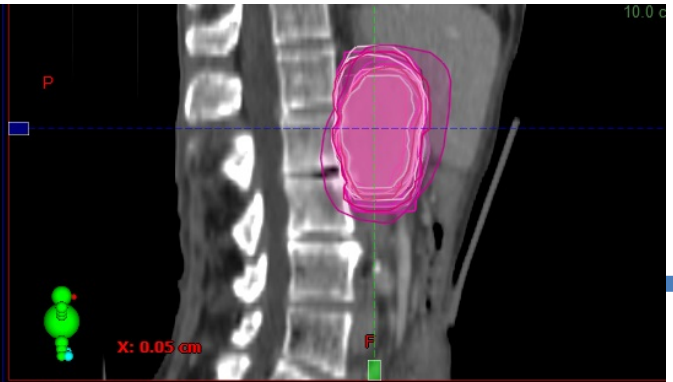
University Medical Center Freiburg, Germany



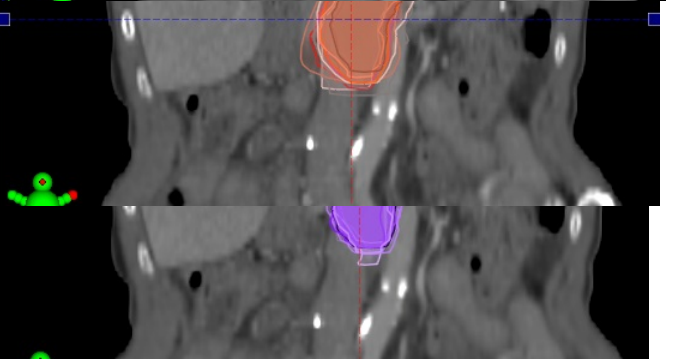
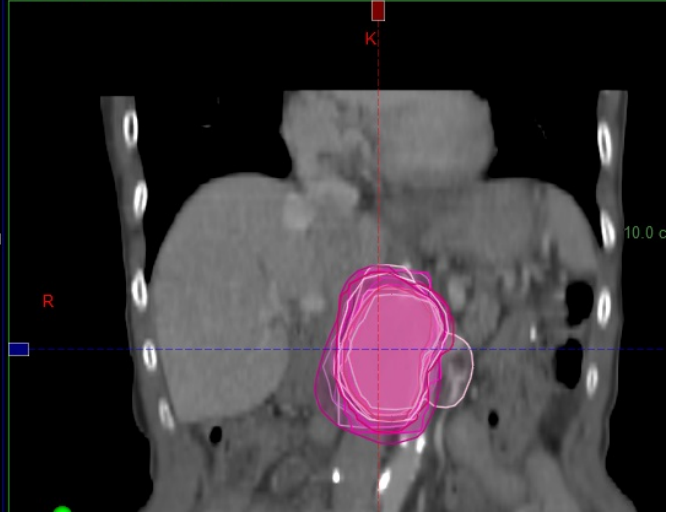
PTV DSE = 0.82, GMI = 0.19, 18 Zentren

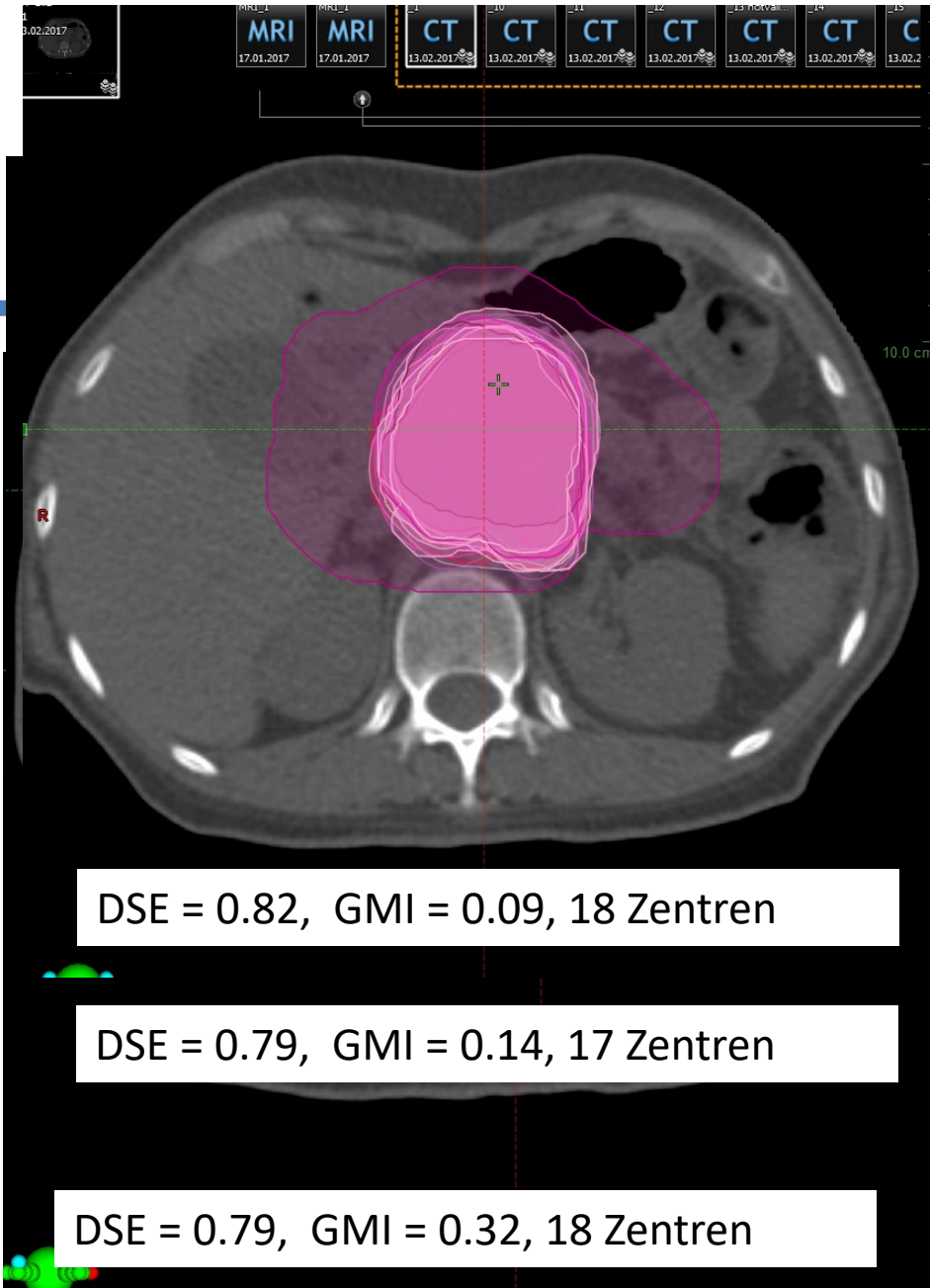
ITV DSE = 0.75, GMI = 0.22, 16 Zentren

GTV DSE = 0.73, GMI = 0.42, 18 Zentren



Frontal - _1 - 09.07.2018 14:05

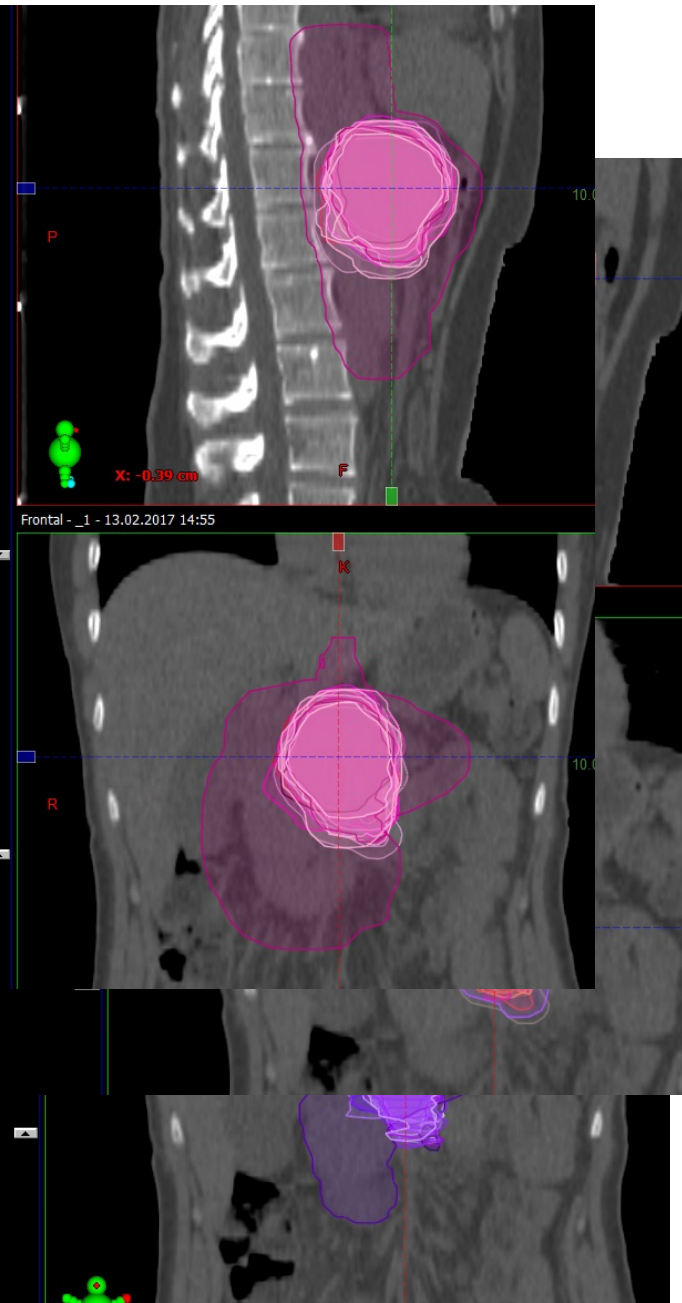


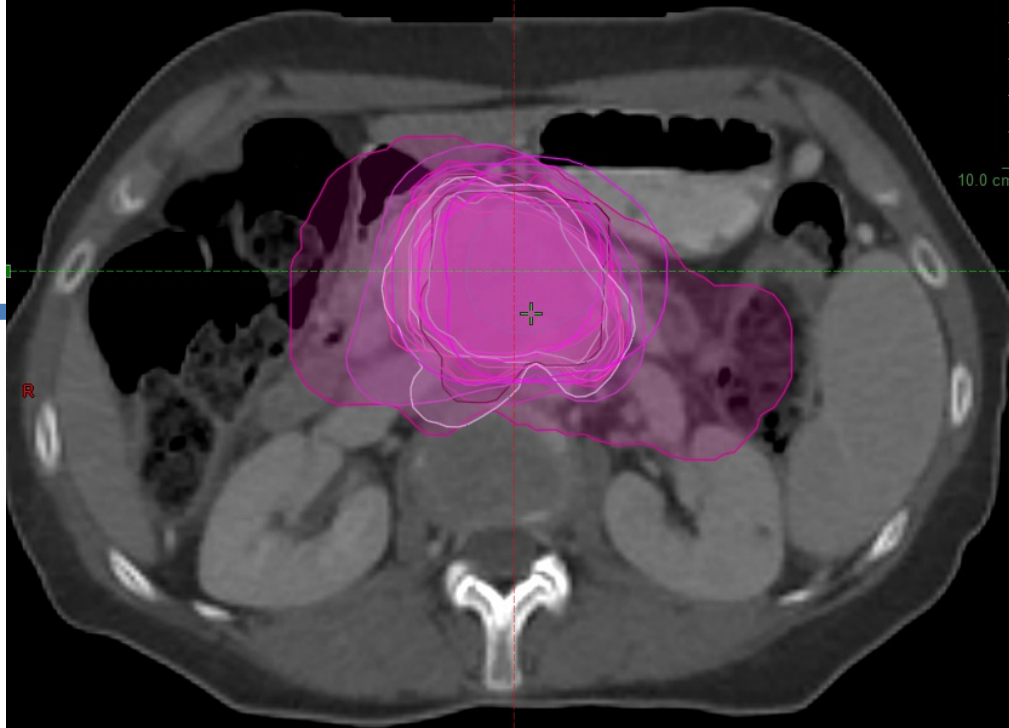


DSE = 0.82, GMI = 0.09, 18 Zentren

DSE = 0.79, GMI = 0.14, 17 Zentren

DSE = 0.79, GMI = 0.32, 18 Zentren

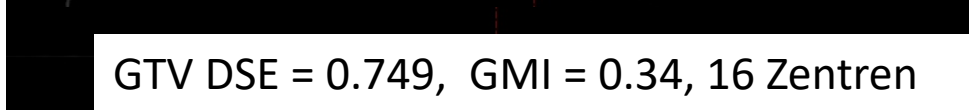




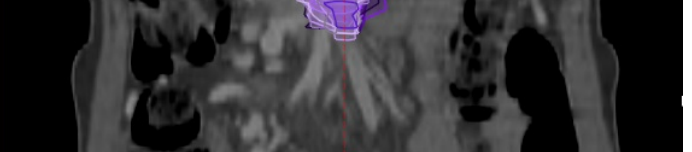
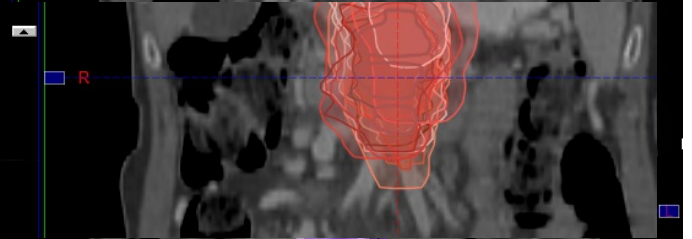
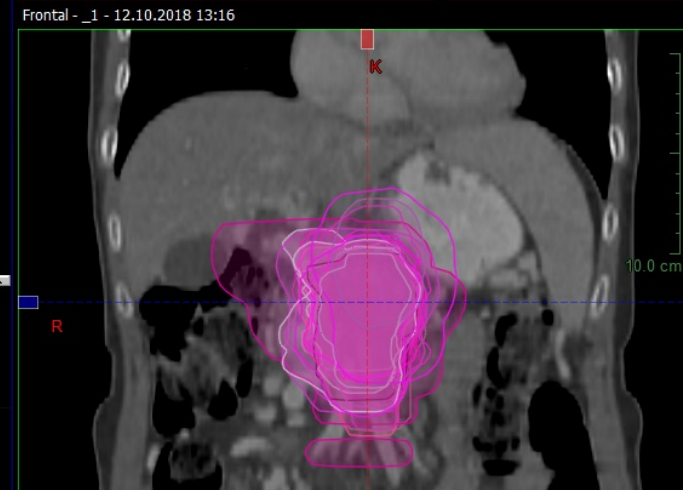
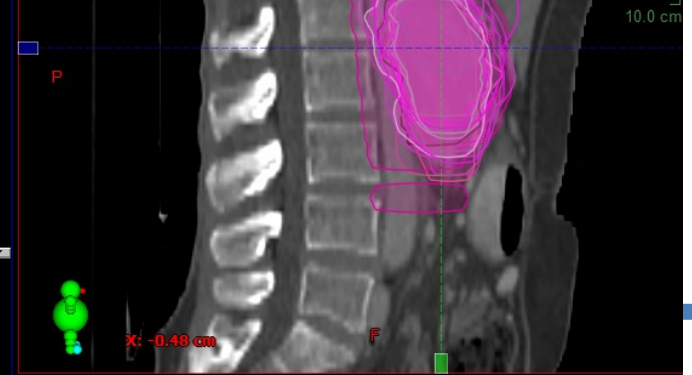
PTV DSE = 0.76, GMI = 0.11, 16 Zentren



ITV DSE = 0.70, GMI = 0.09, 14 Zentren

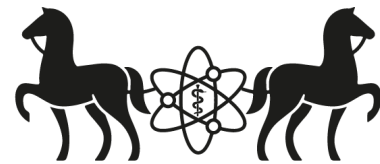


GTV DSE = 0.749, GMI = 0.34, 16 Zentren



Teil 2: Planungsstudie

- vorgegebener Strukturensatz
- Planung der 3 Fälle mit jeweils 2 Fraktionierungsschemata



Phase 2 Multi-institutional Trial Evaluating Gemcitabine and Stereotactic Body Radiotherapy for Patients With Locally Advanced Unresectable Pancreatic Adenocarcinoma

Joseph M. Herman, MD, MSc¹; Daniel T. Chang, MD²; Karyn A. Goodman, MD³; Avani S. Dholakia, MD¹; Siva P. Raman, MD⁴; Amy Hacker-Prietz, PA-C¹; Christine A. Iacobuzio-Donahue, MD⁵; Mary E. Griffith, RN¹; Timothy M. Pawlik, MD⁶; Jonathan S. Pai, BA²; Eileen O'Reilly, MD⁷; George A. Fisher, MD⁸; Aaron T. Wild, MD¹; Lauren M. Rosati, BS¹; Lei Zheng, MD⁹; Christopher L. Wolfgang, MD⁶; Daniel A. Laheru, MD⁹; Laurie A. Columbo, RN²; Elizabeth A. Sugar, PhD¹⁰; and Albert C. Koong, MD, PhD²

- A total of 33 Gy was given in 5 consecutive fractions (6.6 Gy per fraction).
- No more than 1 cc of the PTV received >130% of the prescription dose (49.2 Gy) and
- >90% of the PTV received 100% of the prescription dose (33 Gy).



Teil 2: Planungsstudie

- vorgegebener Strukturensatz
- Planung der 3 Fälle mit jeweils

– 5 x 6.6 Gy*

– 8 x 7.5 Gy**

*EQD ₂ ₁₀ = 45.7 Gy;	BED ₁₀ = 54.8 Gy
**EQD ₂ ₁₀ = 87.5 Gy	BED ₁₀ = 105.0 Gy

- Nach ICRU91:

– D_{near-min}

– D_{near-max}

– D_{mean}

- Risikoorgane: Grenzdosen vorgegeben



Vielen Dank!!!!